



3D FLOWER INSTRUCTIONS



Add a touch of Spring to your Table when you stitch these 3D Flowers.

The 5 petals are created in multiple hooping's, then joined completely in the last hooping, allowing you to make a finished Flower much larger than your 4x4 or 5x7 hoop size



We think these Flowers are perfect for show-casing candles or plants.

We're using the 4x4 size to hold our spare bobbins.

You could add these Flowers to Art Quilts, or Tote Bags

FINISHED SIZE

The physical finished size will depend on how 3D your flowers are – but approximate sizes are:

4x4 Hoop – 7 inches

5x5 hoop – 10 inches

I've been playing with the idea of a 3D in the hoop Flower for a while now, and this is my final sample. This is not a beginner design – while there isn't any technique that is new or hard, having previous experience with joining of Large Applique designs will make this Flower easier to do!!

MATERIALS

- Water Soluble Stabiliser to fit hoop
- Thin Batting
- Sharp scissors
- Matching Bobbin Thread
- Fabric as below
 - 4x4 Hoop
 - 5x5 inch square of Front/Back Fabric and Batting for each Petal (5) and Centre **
 - 5x5 Hoop
 - 6x6 inch square of Front/Back Fabric and Batting for each Petal (5) and Centre **

** Depending on your available hoops, you may be able to stitch multiple Petals in one or two hooping's – in which case, you need Front/Back and Batting to fit your hoop



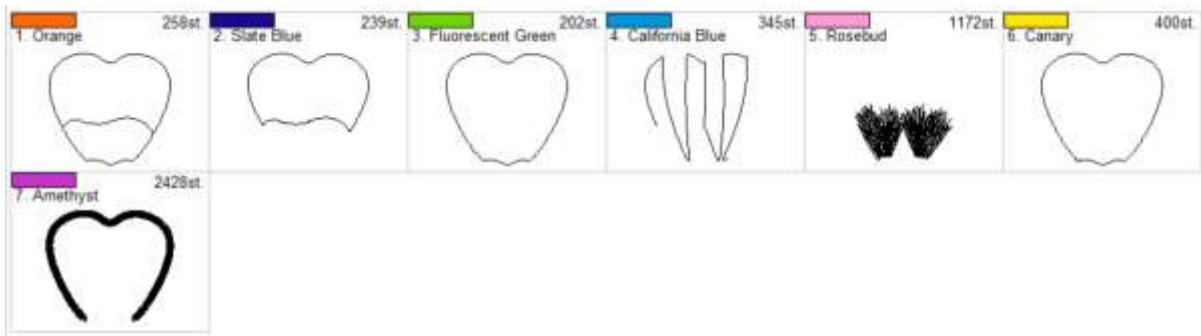
TIP

We've used different colors for each segment of the Petals, so you can do a color sort, so all the outlines stitch, then all the placements stitch etc

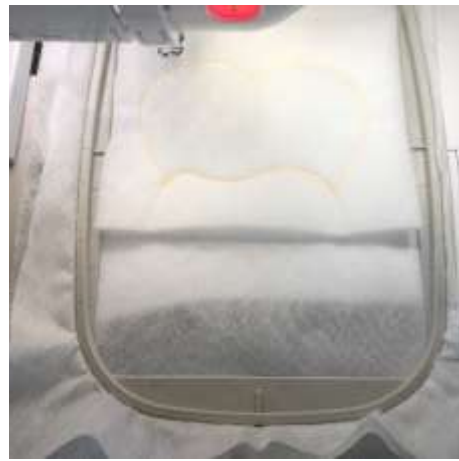
YOU WILL NEED TO CLIP THE JUMP STITCHES to ensure they don't get caught up in the Petals

[CLICK HERE TO WATCH OUR VIDEO SHOWING HOW WE MAKE THIS 3D FLOWER](#)

CONSTRUCTION – PETALS – **STITCH 5 PETALS**



1. Load Petal- (hoop size) to your machine
2. Thread your machine with a neutral color
3. Hoop 2 layers of Water-Soluble Stabiliser
4. Stitch Color 1 – Outline of the Petal with placement line for Batting
5. Place Batting only over the top placement line
6. Stitch Color 2 to attach Batting



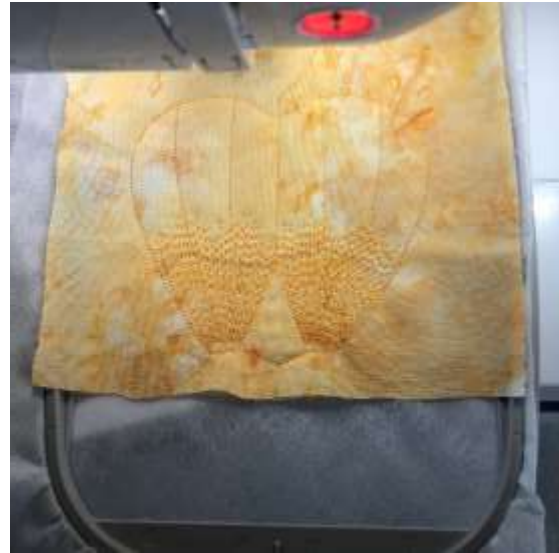
7. Cut away excess Batting



8. Place your Petal Fabric piece over the **full** Placement Line
9. Stitch Color 3 to attach



10. Change thread to the color you want for Quilted Lines on the Petals (we used one color through-out)
11. Stitch Color 4 – Quilt Lines
12. Chang thread to color you want for Inner Petal detail
13. Stitch Color 5 – Inner detail



Float your Backing Fabric
WRONG SIDE OF FABRIC FACING THE HOOP

(With the WSS, you can see the backing fabric and ensure it covers the stitched guidelines completely)

If you are not comfortable floating your backing fabric, you can do as below

Remove your hoop from the machine and as pictured, use small pieces of tape to hold the backing fabric in place, then return hoop to machine

Wrong-side of Fabric facing the hoop



Then return hoop to machine

14. Stitch Color 6 to attach your backing

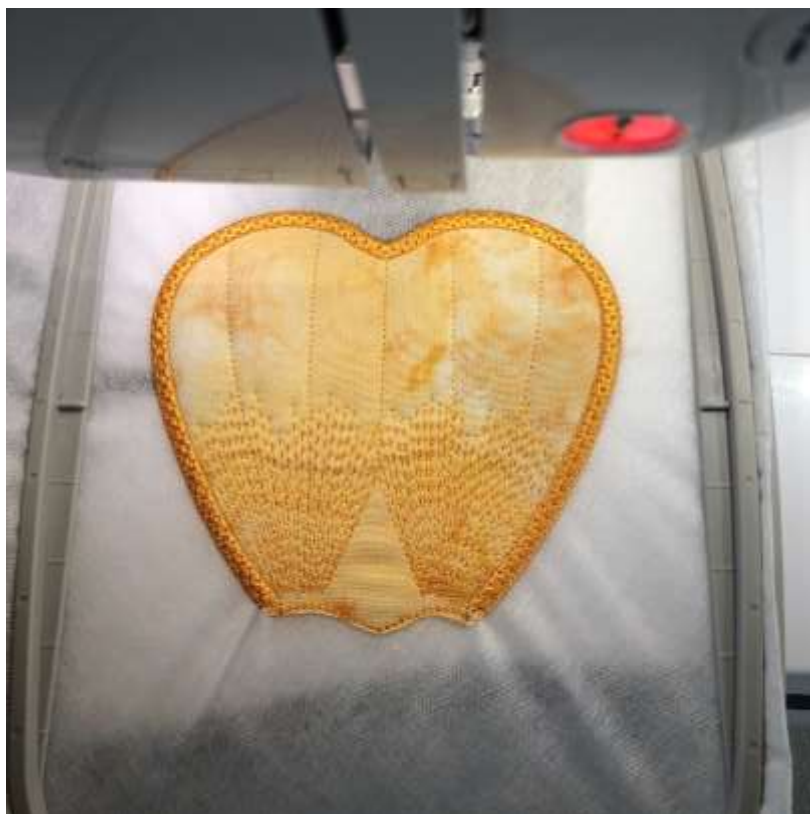
15. Remove hoop from Machine and with sharp scissors, cut away excess fabric (Front and Back)

16. Return hoop to Machine



17. Change Bobbin Thread to match your satin stitch

18. Stitch last color which completes the satin stitch edge and decorative stitch



19. Remove from hoop

20. Carefully cut away excess Stabiliser

21. Use a Q-Tip and warm water to remove all traces of stabiliser

FOLDING PETALS

How you fold your petals determines how '3D' your Flower will be



Fold the petal **Left over Right** – The fold is to the right, and the excess fabric goes towards the left-hand side on the back – folding the Petal this way lowers the risk of the Petal getting caught in your presser foot

(we stitch over the fold, rather than 'into' the fold)



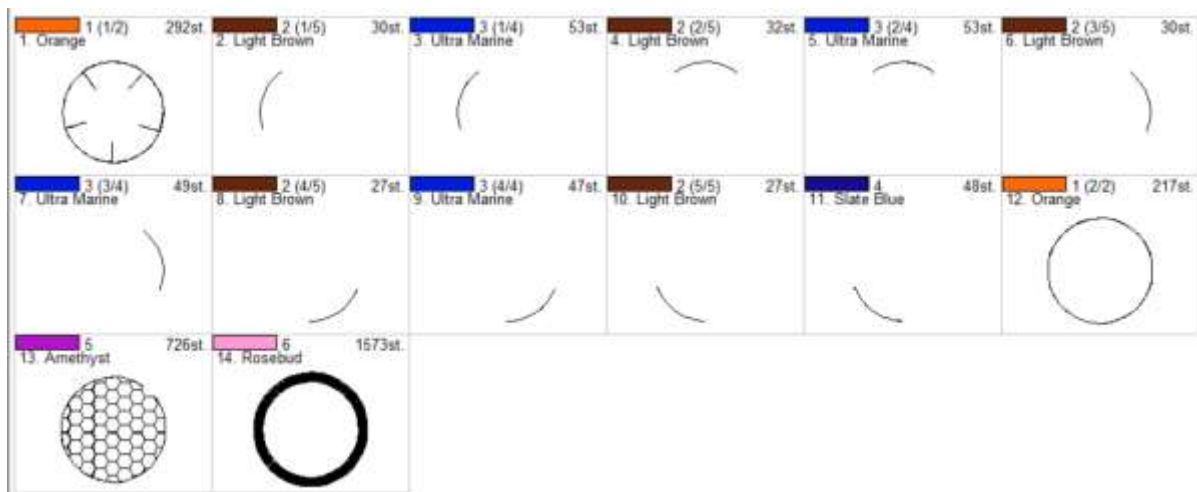
For maximum 3D effect

Your Petal should not be completely flat once you fold in the excess fabric

You fold only to the detailed stitching, and the top of the Petal is flat and sticks up at an angle

Once you are happy with your folded Petal, place a piece of tape over the fold – ready to place on your centre

CONSTRUCTION - CENTRE



Don't be worried – while the stitch sequence looks intimidating, it really isn't- there are five petals to place. Each Petal we stitch once to attach, then when we are happy with the placement, we do a second pass to ensure your Petal is firmly attached.

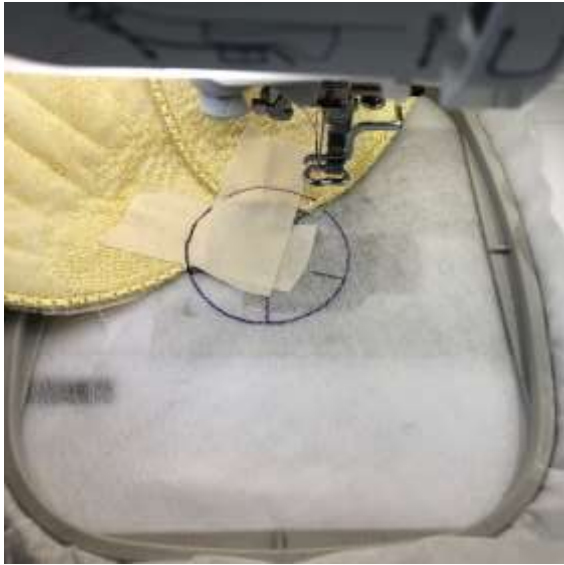
1. Load Centre (hoop size) to your machine
2. Thread your machine with a neutral color
3. Hoop 2 layers of Water-Soluble Stabiliser
4. Stitch Color 1 – Outline of the Centre with placement line for Petals



5. Place your first Petal within the top left space as pictured
6. Firmly tape the Petal in place
7. Stitch Color 2 to attach
8. Our machine will stitch from the bottom to the top



9. Once you are happy with your Petal Placement, Stitch Color 3 which stitches back to the bottom, and up to the top again
10. Repeat for the next four petals



Colors 4 and 5



Colors 6 and 7



Colors 8 and 9

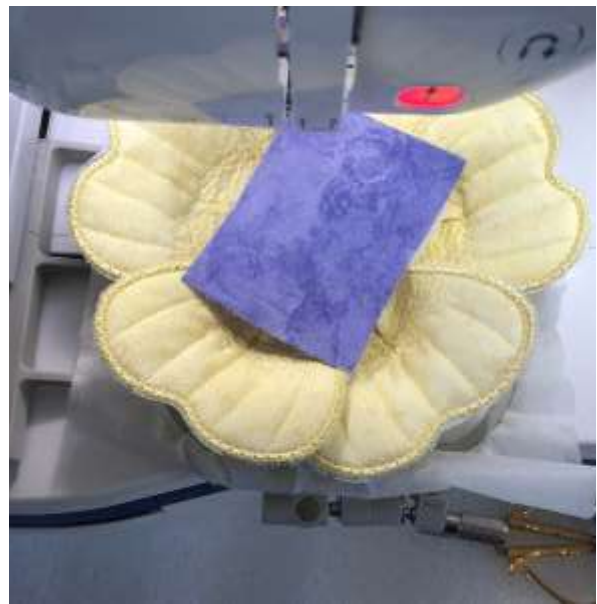


Colors 10 and 11

11. Remove hoop from Machine and with your sharpest scissors trim away the excess bulk in the centre

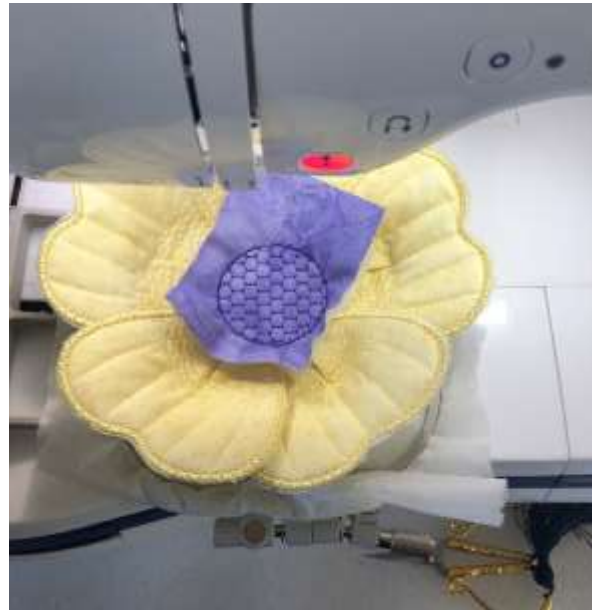


12. Return hoop to Machine
13. Float your backing Fabric under the hoop (or tape in place)
14. Place Batting and then Top Fabric over the centre piece



Batting in the centre is optional – If you are worried about bulk, you can leave it out completely,

15. Change bobbin thread to matching color (If you want the bottom to be seen)
16. Stitch Color 12 to attach
17. Stitch Color 13 for the Quilting Detail – or skip this color to leave out the quilting



18. Remove hoop from machine
19. Cut away excess fabric on the front and back of the flower



20. Return hoop to Machine

21. Stitch last color which completes the Satin Stitch edge



22. Remove from hoop

23. Carefully cut away excess Stabiliser

24. Use a Q-Tip and warm water to remove all traces of stabiliser



I quite like the effect of layering the 4x4 and 5x7 size together



As with most things, my first sample wasn't as good as the rest – I hadn't folded the Petals right to get the 3D effect, so it was a little flat – rather than can it, I pinned the sides together with a slight over-lap which gave it the 3D effect, and stitched with my sewing machine



Be sure to Join [Kreative Kiwi Group](#) to share photos of your Designs (and see what fellow Machine Embroidery Addicts have created, or view our [Inspirations](#) page

Cheers Heather

*Kreative Kiwi Embroidery Ltd holds the copyright to all embroidery designs and instructions on this website. These digitized embroidery designs are protected under International Copyright Law & Treaties. The designs and files cannot be sold, duplicated or shared in any way and are for use by the original purchaser/user only. You may not lend, give or sell the files to anyone else ever. You may not change, add to, delete parts of, or alter files and then call them you own. **or sell them as your own Embroidery Design***

